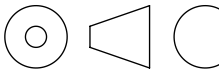


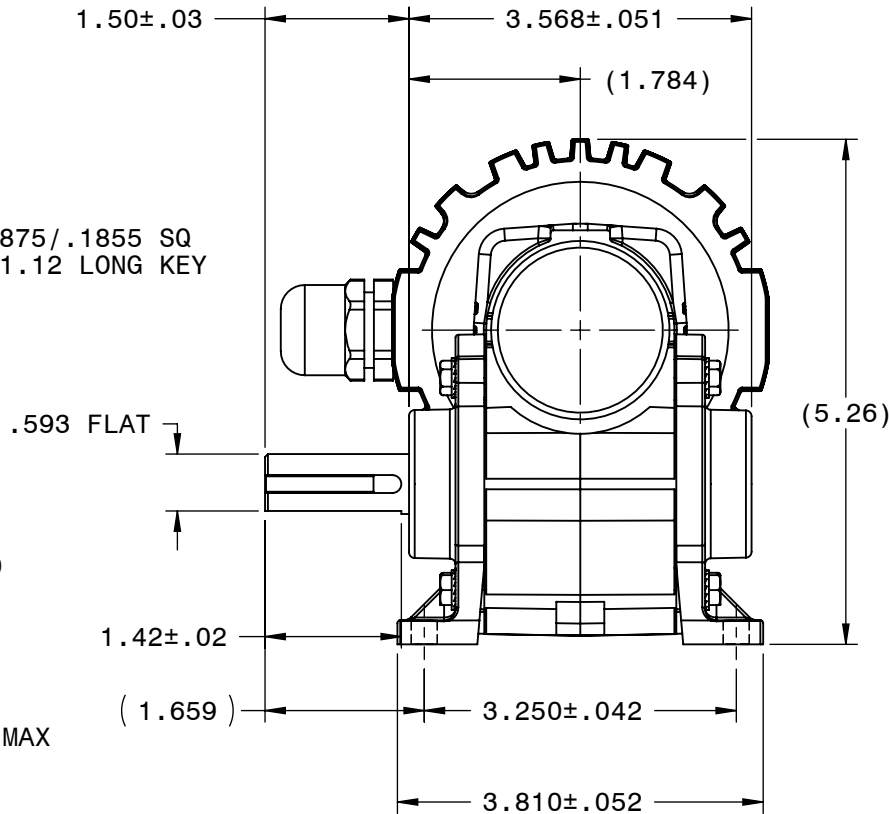
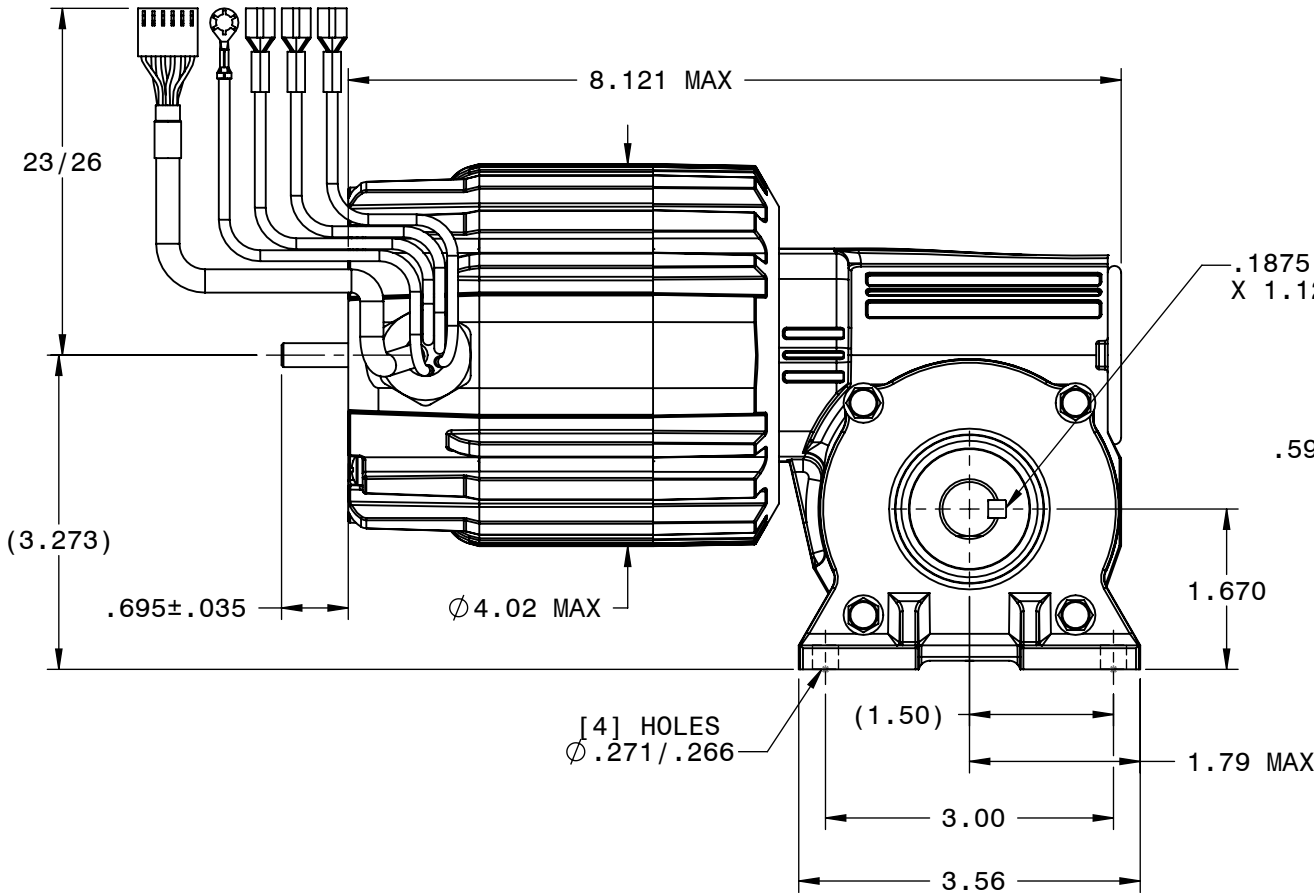
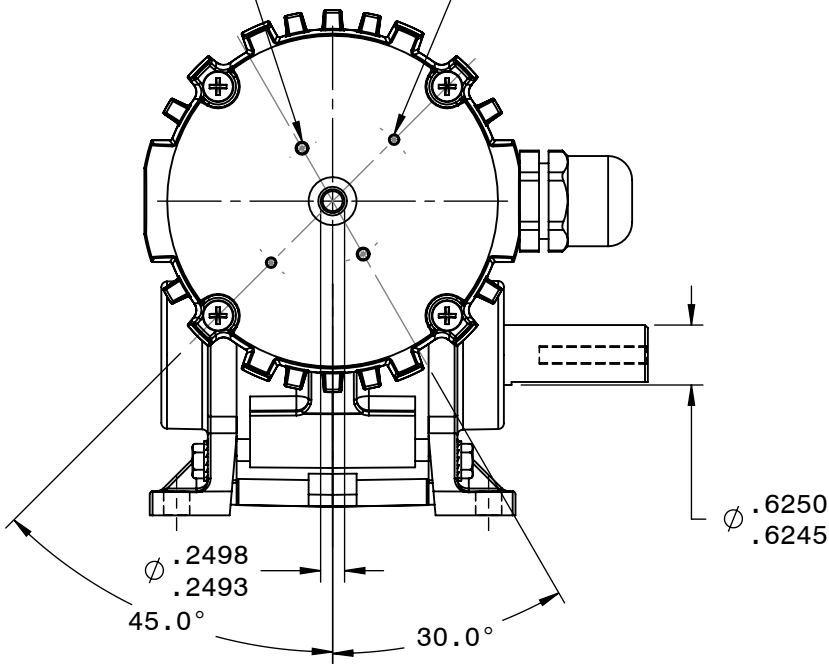
BODINE ELECTRIC COMPANY



PART NO./REV: INFM0271 A	
DESCRIPTION: GEARMOTOR 34B4FEBL-5N	
SHEET: 1/1	UNLESS OTHERWISE SPECIFIED: UNITS ARE IN INCHES [mm] TOLERANCES: .XX:±.01 .XXX:±.005 ANGLES: X°:±3° X.X°:±0.5°
SCALE: 1:2	
B	

2X 6-32 UNC-2B
↓.19 MAX
180.0° APART ON
Ø1.274

2X 4-40 UNC-2B
↓.19 MAX
180.0° APART ON
Ø1.812



REPRESENTATIVE OF MODEL NUMBER(S):
3691 3692 3693 3694 3695

