



# 34R-FX AC CI/D2 Fixed-Speed PSC Gearmotors

Class I, Division 2 Construction For Hazardous Locations

Our 34R-FX permanent split capacitor (PSC) gearmotors are available with factory-installed terminal box, terminal block, and capacitor. These gearmotors meet NEC Class I, Division 2 standards for use in environments where flammable gases or vapors may accidentally be spilled or leak into the operating area.

## Class I, Division 2 Construction

- Suitable for environments where flammable vapors may occasionally be present
- Terminal box, terminal block, pre-wired run capacitor
- Inverter-duty 230/460 VAC, 3-phase models also available from stock

## FX Gearhead Features

- All steel helical gears; lubricated for life
- Gearing meets or exceeds AGMA 9 standards for quiet operation
- Synthetic lubricant improves performance, and allows these gearmotors to operate in a wide temperature range



## Typical Applications

These AC fixed-speed gearmotors are designed to drive applications such as conveyor systems, packaging equipment, metering devices, commercial appliances and applications that require Class I, Division 2 standards.

## Type 34R6-FX, AC Fixed Speed, PSC Gearmotors (Groups A ,B, C and D; Temperature Code T3C)

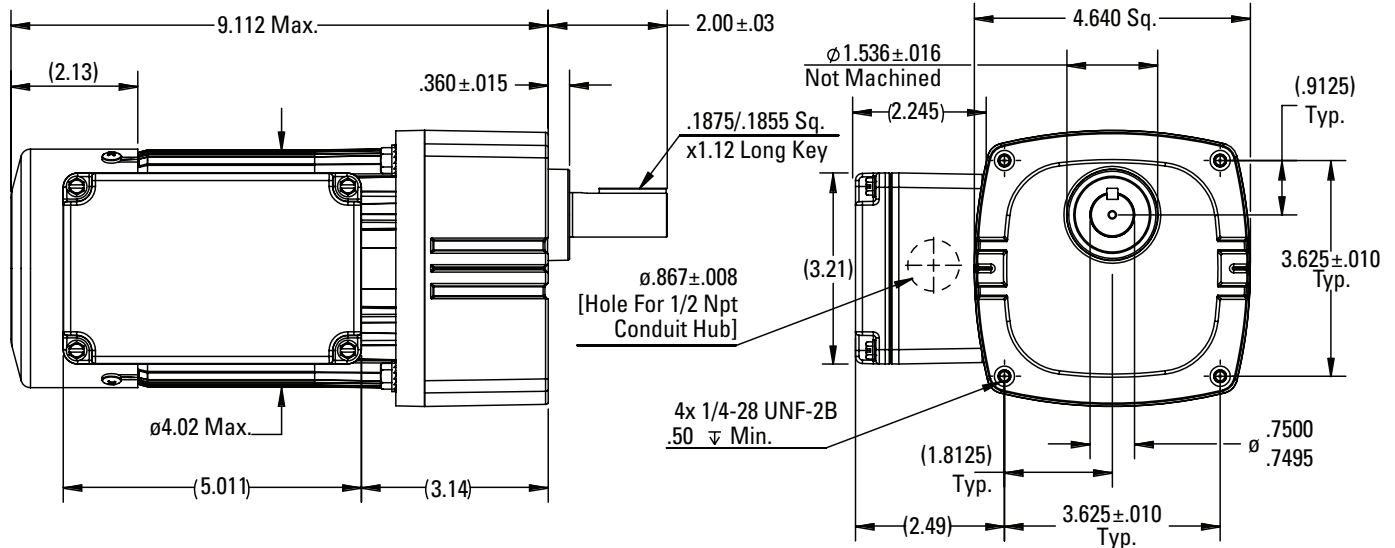
| Speed (rpm)   | Rated Torque (lb-in) | Power (HP) | Voltage | Frequency (Hz) | Phase | Current (Amps) | Gear Ratio | Radial Load (Lbs) | Product Type | Model Number               |
|---|----------------------|------------|---------|----------------|-------|----------------|------------|-------------------|--------------|----------------------------|
| Permanent Split Capacitor, Non-synchronous 3-Wire-Reversible (TEFC) IP-44 |                      |            |         |                |       |                |            |                   |              | Capacitor is pre-installed |
| 5.7   | 350                  | 1/7        | 115     | 60             | 1     | 1.6            | 300:1      | 274               | 34R6BFCI-FX4 | 3249                       |
| 9   | 350                  | 1/7        | 115     | 60             | 1     | 1.6            | 180:1      | 274               | 34R6BFCI-FX4 | 3248                       |
| 14  | 350                  | 1/7        | 115     | 60             | 1     | 1.6            | 120:1      | 274               | 34R6BFCI-FX4 | 3247                       |
| 28  | 273                  | 1/7        | 115     | 60             | 1     | 1.6            | 60:1       | 300               | 34R6BFCI-FX3 | 3246                       |
| 43  | 182                  | 1/7        | 115     | 60             | 1     | 1.6            | 40:1       | 300               | 34R6BFCI-FX3 | 3245                       |
| 57  | 137                  | 1/7        | 115     | 60             | 1     | 1.6            | 30:1       | 300               | 34R6BFCI-FX3 | 3244                       |
| 85  | 91                   | 1/7        | 115     | 60             | 1     | 1.6            | 20:1       | 300               | 34R6BFCI-FX3 | 3243                       |
| 113   | 68                   | 1/7        | 115     | 60             | 1     | 1.6            | 15:1       | 300               | 34R6BFCI-FX2 | 3242                       |
| 170   | 46                   | 1/7        | 115     | 60             | 1     | 1.6            | 10:1       | 300               | 34R6BFCI-FX2 | 3241                       |
| 340   | 24                   | 1/7        | 115     | 60             | 1     | 1.6            | 5:1        | 62                | 34R6BFCI-FX1 | 3240                       |

These gearmotors are supplied with a factory-installed large terminal box, terminal block, and PSC models with pre-wired run capacitor (27.5µF / 250VAC).



## 34R-FX Class I, Division 2 AC Fixed-Speed PSC Gearmotors

Dimensions (inches).



### Optional Accessories



#### L-Bracket Kit for E, F and FX gearmotors [model 0969]

This L-bracket kit allows for base or side-wall mount of our type E, F, and FX gearmotors (will not fit 48R-F or 48R-FX). Our standard gearmotors are designed to operate in any horizontal mounting orientation (drive shaft in 12, 3, 6 or 9 o'clock position).



#### Adaptor plate kit for E, F, W, WX and FX gearmotors [model 0995]

This 3-hole mounting adaptor plate for our E/F, WX and FX gearmotors provides an easy way to replace various competitor gearmotors (e.g. Bison, Leeson, Grainger).

## Also available as:



## Brushless DC Gearmotors for Class I/Div. 2 Hazardous Locations

### Type 34B/SR-WX BLDC Gearmotors with Built-In Speed Controls

Our 34B4/SR-WX INTEGRAMotors™ meet NEC Class I, Division 2 standards for use in environments where flammable gases or vapors may accidentally be spilled or leak into the operating area. Available as standard products, they combine a PWM speed control, a brushless DC motor and a high-torque gearhead in one compact package.