

Model No. 0988 Terminal Box Kit

Mounting Instructions for Bodine

Type 42R (AC) Hypoid Gearmotors

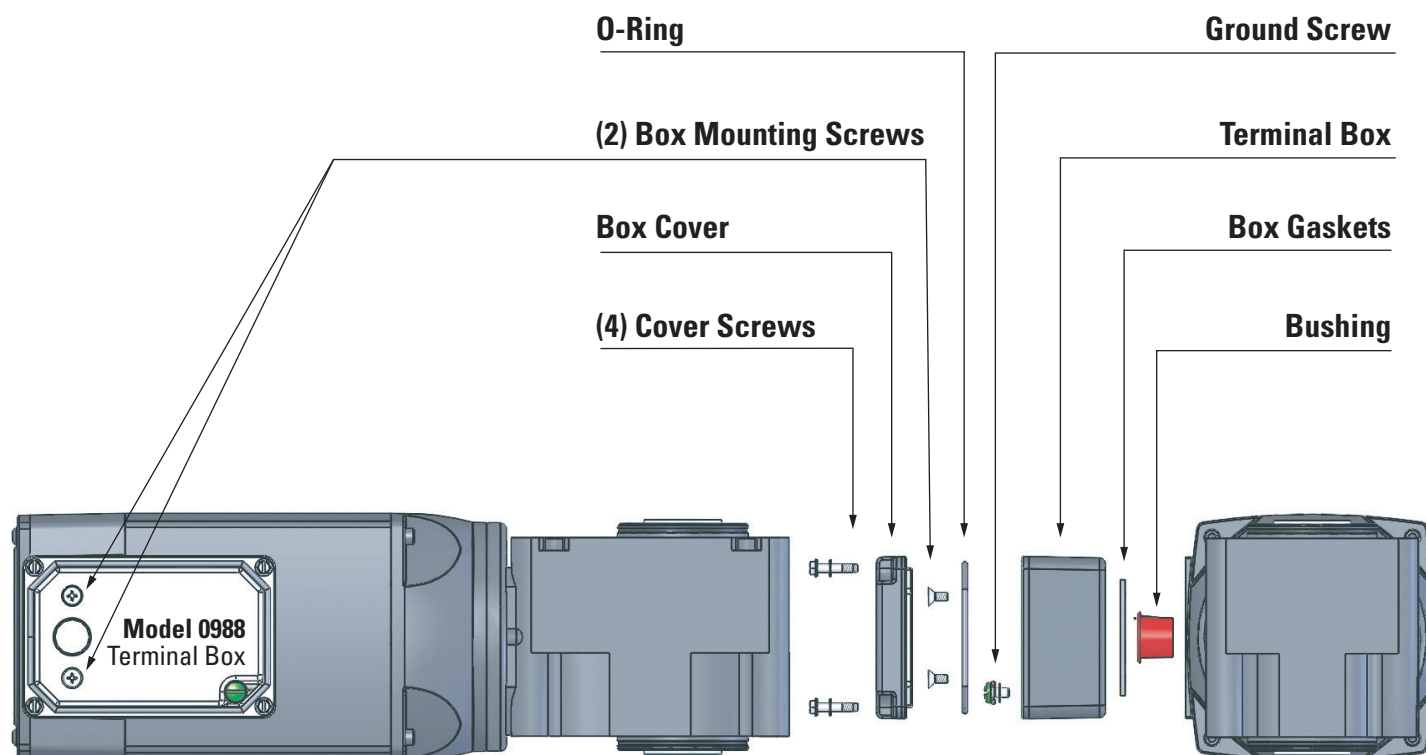
Terminal box kit model 0988 is intended to be used with our 42R- 25H2 and 42R-30H3 hypoid AC gearmotors.

- 1) Insert the red protective bushing into the threaded hole located in the end shield wiring compartment. The bushing is split and can be folded onto itself if needed so that it can be fully seated into the threads.
- 2) Remove the protective backing and apply the foam rubber gasket to the outside face of the terminal box, aligning the precut gasket holes with the terminal box holes.
- 3) If possible, position the gearmotor/motor with the lead exit facing up. Position the terminal box over the corresponding tapped mounting holes in the end shield. Gently pull the motor leads through the .750 inch diameter hole in the bottom of the terminal box.

- 4) Install the two (2) supplied #10-32 x .38 inch long countersunk head screws and tighten to 30 lb-in.
- 5) The motor leads may be shortened by cutting and re-stripping if deemed necessary. Connect the unit to the line per the connection diagram provided with the motor. (WARNING: wiring must conform to NEC and other applicable standards.)
- 6) Install the O-ring into the groove located on the inner surface near the outer edge of the cover. Ensure that the O-ring is secure and fully seated into the groove. Do not twist. Fasten the terminal box cover onto the terminal box using the four (4) supplied #8-32 x .81 inch long hex washer head screws and the four (4) toothed lock washers. Tighten cover to 14-18 lb-in.

Please contact our tech support team if you have additional questions or need assistance. E-mail: info@bodine-electric.com.

Model No. 0988 Terminal Box Installation



⚠ WARNING: Gearmotor/motor must be disconnected from electrical power source before installing terminal box.