



New Hypoid Brushless DC Hollow-Shaft Gearmotors

The new type 42B-25H2 and 42B-30H3 hypoid gearmotors combine our all new high-performance 42B brushless DC motor with our two hypoid gearheads. The gearmotors' high torque and efficient design makes them an ideal drive solution for access gates, industrial conveyor systems, and packaging or food processing equipment. Bodine type 42B hypoid gearmotors are drop-in alternative for many Bison, Brother and Oriental hypoid gearmotors.

Type 25H2 and 30H3 Hypoid Gearheads

- More energy-efficient than similar worm-gear models
- IP-66 protection against water ingress and dust
- Hollow shaft eliminates expensive shaft couplings, and mounting hardware
- Unvented gearhousing mounts in any orientation
- Permanently lubricated with high-performance lubricant
- Hardened steel gears for long life and maximum performance



Type 42B-25H2



Type 42B-30H3

42B Motor Features (130VDC)

- 42B4 brushless DC motor provides high starting torque, variable speed, and predictable performance.
- 8-pole design, 120 degree commutation
- Class "F" insulation; rated ambient temperature: +40°C
- Built-in, 256ppr magnetic encoder with commutation track
- Motor terminated via two built-in watertight connectors (power and signals)



Typical Applications

Ideal for applications that require higher torque and lower power consumption than gearheads utilizing worm gears can provide: conveyors, pumps, packaging and other industrial automation equipment.

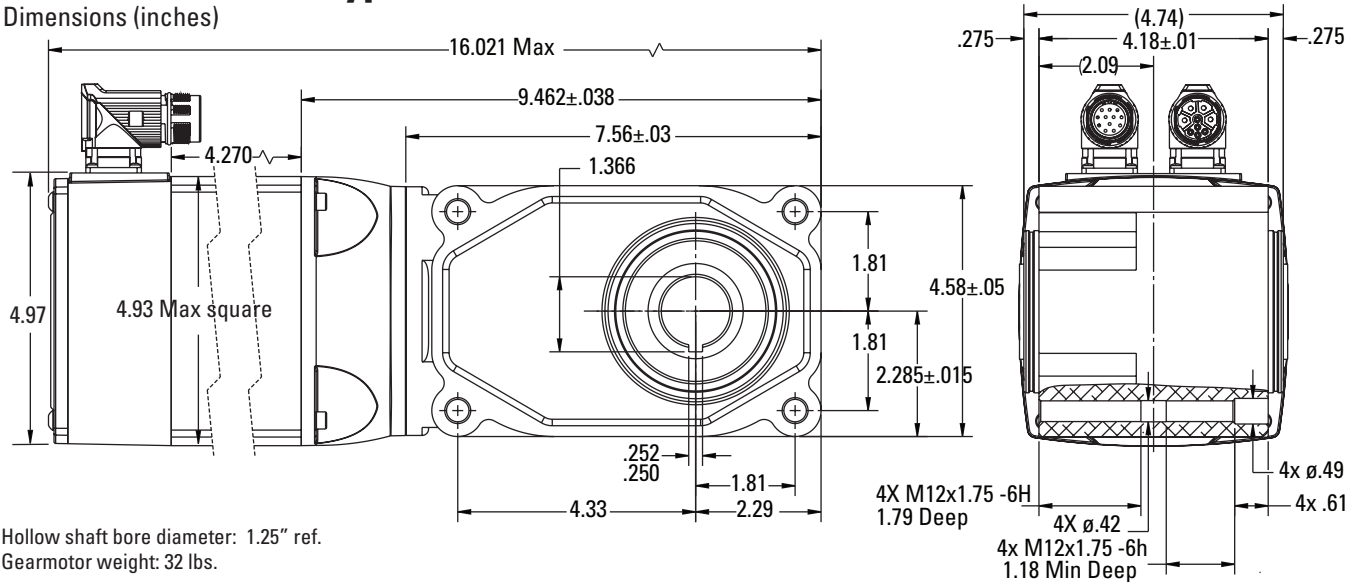
Gearmotor Specifications and Ratings

Speed (rpm)	Rated Torque (lb-in.)	Rate Current (Amps)	Peak Torque (lb-in.)	Power (HP)	Gear Ratio	Radial Load (lbs.)	Product Type	Model Number
130VDC, 8-pole, 120° commutation, Totally Enclosed, Non-ventilated, Class F, IP-66								
8	2370	3.8	3440	1/2	240	708	42B4FEBL-30H3	3084
10	2275	3.8	3151	1/2	200	708	42B4FEBL-30H3	3083
13	1953	3.8	3316	1/2	160	708	42B4FEBL-30H3	3082
17	1465	3.8	3119	1/2	120	708	42B4FEBL-30H3	3081
25	977	3.8	2079	1/2	80	696	42B4FEBL-30H3	3080
33	703	3.8	1562	1/2	60	575	42B4FEBL-25H2	3079
50	488	3.8	1041	1/2	40	518	42B4FEBL-25H2	3078
67	394	3.8	925	1/2	30	475	42B4FEBL-25H2	3077
100	263	3.8	617	1/2	20	419	42B4FEBL-25H2	3076
133	197	3.8	463	1/2	15	388	42B4FEBL-25H2	3075
200	131	3.8	308	1/2	10	342	42B4FEBL-25H2	3074
400	66	3.8	154	1/2	5	277	42B4FEBL-25H2	3073

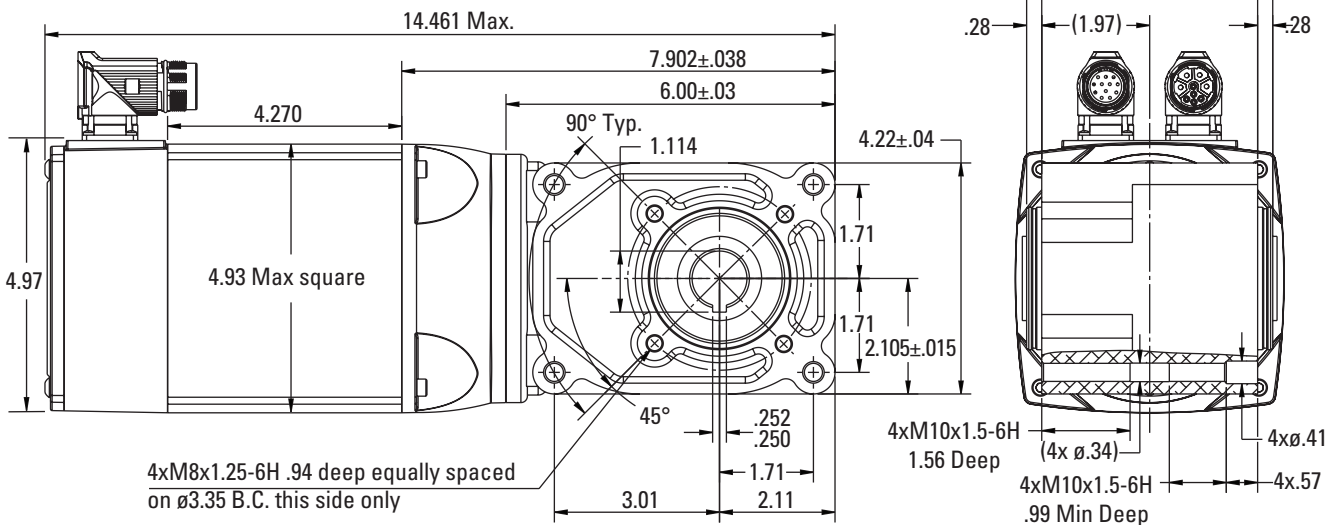


42B4-30H3 BLDC Hypoid Gearmotor

Dimensions (inches)



42B4-25H2 BLDC Hypoid Gearmotor



Hypoid Gearmotor Accessories

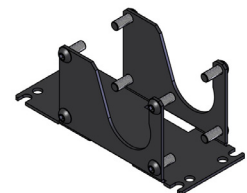
Bodine's optional hypoid gearmotor accessories include shaft kits for both the 25H2 and 30H3 gearheads, shaft cover kits (non-extension side), base/foot mount brackets for both gearheads.



Shaft cover kits
Model 0952 for type 25H2 gearhead
Model 0953 for type 30H3 gearhead



Shaft kits
Model 0929 for type 25H2 gearhead (1" dia.)
Model 0930 for type 30H3 gearhead (1-1/4" dia.)



Base/foot mount brackets
Model 0957 for type 25H2 gearhead
Model 0959 for type 30H3 gearhead