



New Hollow-Shaft Hypoid PMDC Gearmotors

130VDC, 90VDC and 180VDC

The new type 33A7-25H2 and 33A7-30H3 hypoid gearmotor combines our high-performance 33A PMDC motor with our all new hypoid gearheads. The gearmotor's high torque and efficient performance make it ideal for conveyor systems, food processing, medical equipment and factory automation.

All-New Type 25H2 and 30H3 Hypoid Gearhead

- More energy-efficient than similar worm-gear models
- Hollow shaft eliminates expensive shaft couplings, and mounting hardware
- Unvented gearhousing mounts in any orientation
- Permanently lubricated with high-performance lubricant
- Hardened steel gears for long life and maximum performance

33A Motor Features

- Totally enclosed non-ventilated
- High starting torque
- Class "F" insulation and ratings
- Pre-seated motor brushes for optimum performance and quiet operation
- Permanently lubricated, noise-tested, sealed, ball bearings
- Encoder-compatible with new optional screw-in encoder shaft kit (standard/stock models supplied with factory-installed cover over shaft opening)



Type 33A7-25H2



Type 33A7-30H3

Typical Applications

Ideal for applications that require higher torque and lower power consumption than gearheads utilizing worm gears can provide: conveyors, pumps, packaging and other industrial automation equipment.

Gearmotor Specifications and Ratings

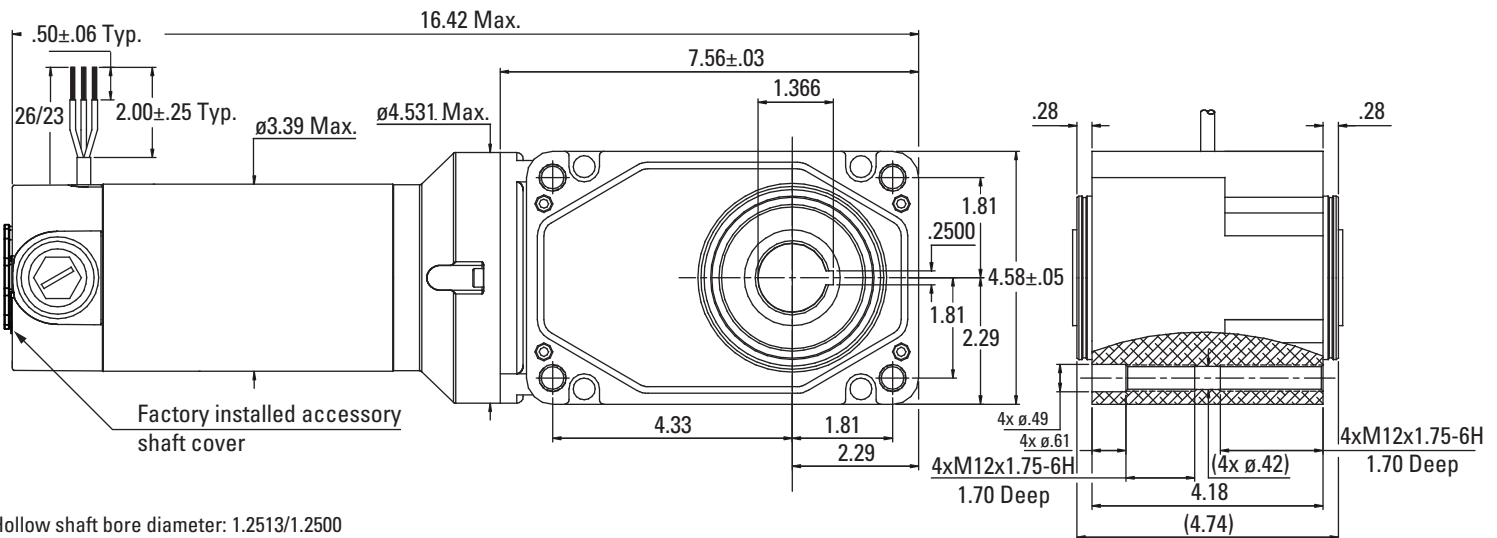
Speed (rpm)	Rated Torque (lb-in.)	Rated Current (Amps)	Peak Torque (lb-in.)	Power (HP)	Form Factor	Gear Ratio	Radial Load (lbs.)	Length (inches)	Weight (lbs.)	Product Type	Item Number						
130 VDC, Totally Enclosed, Non-ventilated, Class F Insulation																	
10	1535	2.3	3212	1/3	1.0	240	708	16.37	24	33A7-30H3	3011						
13	1280	2.3	2676	1/3	1.0	200	708	16.37	24	33A7-30H3	3010						
16	1025	2.3	2141	1/3	1.0	160	708	16.37	24	33A7-30H3	3009						
21	770	2.3	1606	1/3	1.0	120	708	16.37	24	33A7-30H3	3008						
31	510	2.3	1071	1/3	1.0	80	696	16.37	24	33A7-30H3	3007						
42	390	2.3	813	1/3	1.0	60	575	14.82	20	33A7-25H2	3006						
63	260	2.3	542	1/3	1.0	40	518	14.82	20	33A7-25H2	3005						
83	210	2.3	440	1/3	1.0	30	475	14.82	20	33A7-25H2	3004						
125	140	2.3	293	1/3	1.0	20	419	14.82	20	33A7-25H2	3003						
167	105	2.3	220	1/3	1.0	15	388	14.82	20	33A7-25H2	3002						
250	70	2.3	147	1/3	1.0	10	342	14.82	20	33A7-25H2	3001						
500	35	2.3	73	1/3	1.0	5	277	14.82	20	33A7-25H2	3000						
90 or 180 VDC, SCR Rated, Totally Enclosed, Non-ventilated, Class F Insulation ²																	
	90V	180V	90V	180V	90V	180V	90V	180V	90V	180V						90V	180V
10	1120	865	2.3	1.1	2374	1872	1/4	1/5	1.4	1.5	240	708	16.37	24	33A7-30H3	3023	3035
13	935	720	2.3	1.1	1979	1560	1/4	1/5	1.4	1.5	200	708	16.37	24	33A7-30H3	3022	3034
16	750	580	2.3	1.1	1583	1248	1/4	1/5	1.4	1.5	160	708	16.37	24	33A7-30H3	3021	3033
21	560	435	2.3	1.1	1187	936	1/4	1/5	1.4	1.5	120	708	16.37	24	33A7-30H3	3020	3032
31	375	290	2.3	1.1	791	624	1/4	1/5	1.4	1.5	80	696	16.37	24	33A7-30H3	3019	3031
42	285	220	2.3	1.1	601	474	1/4	1/5	1.4	1.5	60	575	14.82	20	33A7-25H2	3018	3030
63	190	145	2.3	1.1	401	316	1/4	1/5	1.4	1.5	40	518	14.82	20	33A7-25H2	3017	3029
83	155	120	2.3	1.1	325	257	1/4	1/5	1.4	1.5	30	475	14.82	20	33A7-25H2	3016	3028
125	100	80	2.3	1.1	217	171	1/4	1/5	1.4	1.5	20	419	14.82	20	33A7-25H2	3015	3027
167	75	60	2.3	1.1	163	128	1/4	1/5	1.4	1.5	15	388	14.82	20	33A7-25H2	3014	3026
250	50	40	2.3	1.1	108	86	1/4	1/5	1.4	1.5	10	342	14.82	20	33A7-25H2	3013	3025
500	25	20	2.3	1.1	54	43	1/4	1/5	1.4	1.5	5	277	14.82	20	33A7-25H2	3012	3024

Ratings are based on operation from DC power. Performance may vary with a speed control. 2. Rated speed is based on 2500 rpm armature speed at rated voltage.

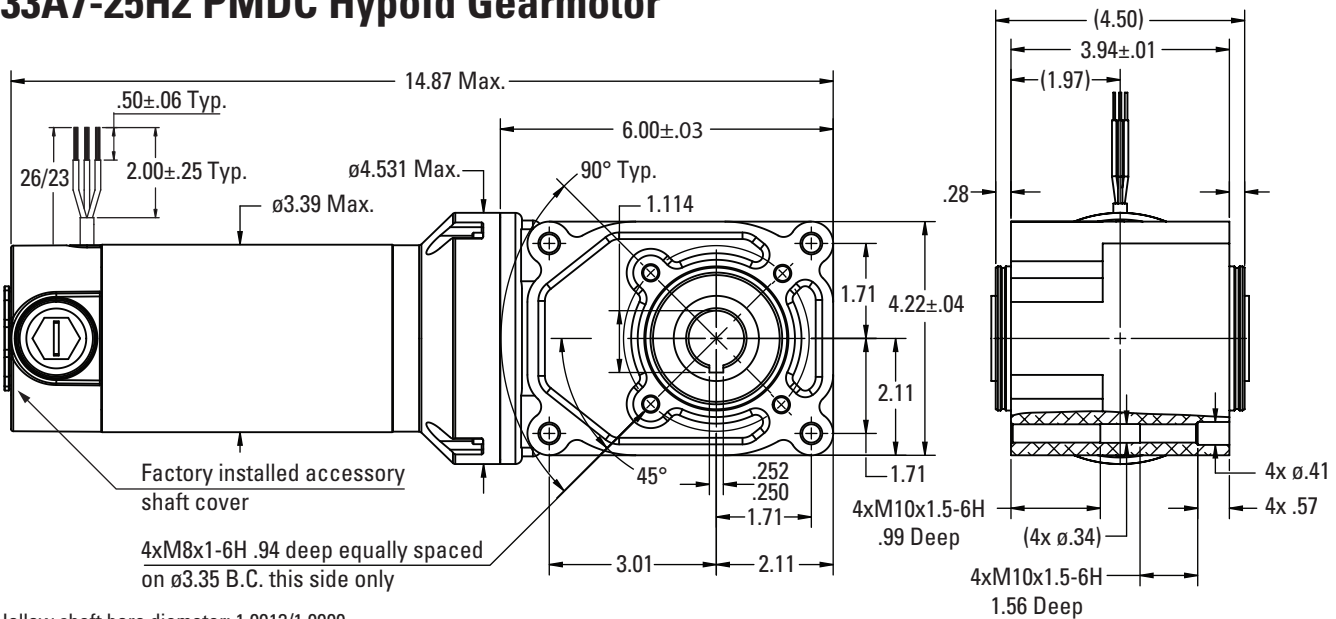


33A7-30H3 PMDC Hypoid Gearmotor (130VDC; 90VDC and 180VDC)

Dimensions (inches)



33A7-25H2 PMDC Hypoid Gearmotor



Hypoid Gearmotor Accessories



Die cast terminal box kits
Model 0984,
0986 (large), and
1984 (Metric)



Screw-in accessory
shaft kit for encoders
Model 0964



Shaft cover kits
Model 0952 for type
25H2 gearhead
Model 0953 for type
30H3 gearhead



Shaft kits
Model 0929 for type 25H2
gearhead (1" dia.)
Model 0930 for type 30H3
gearhead (1-1/4" dia.)



Base/foot mount brackets
Model 0957 for type 25H2 gearhead
Model 0959 for type 30H3 gearhead

© Copyright 2020. All rights reserved. 07481127.A