

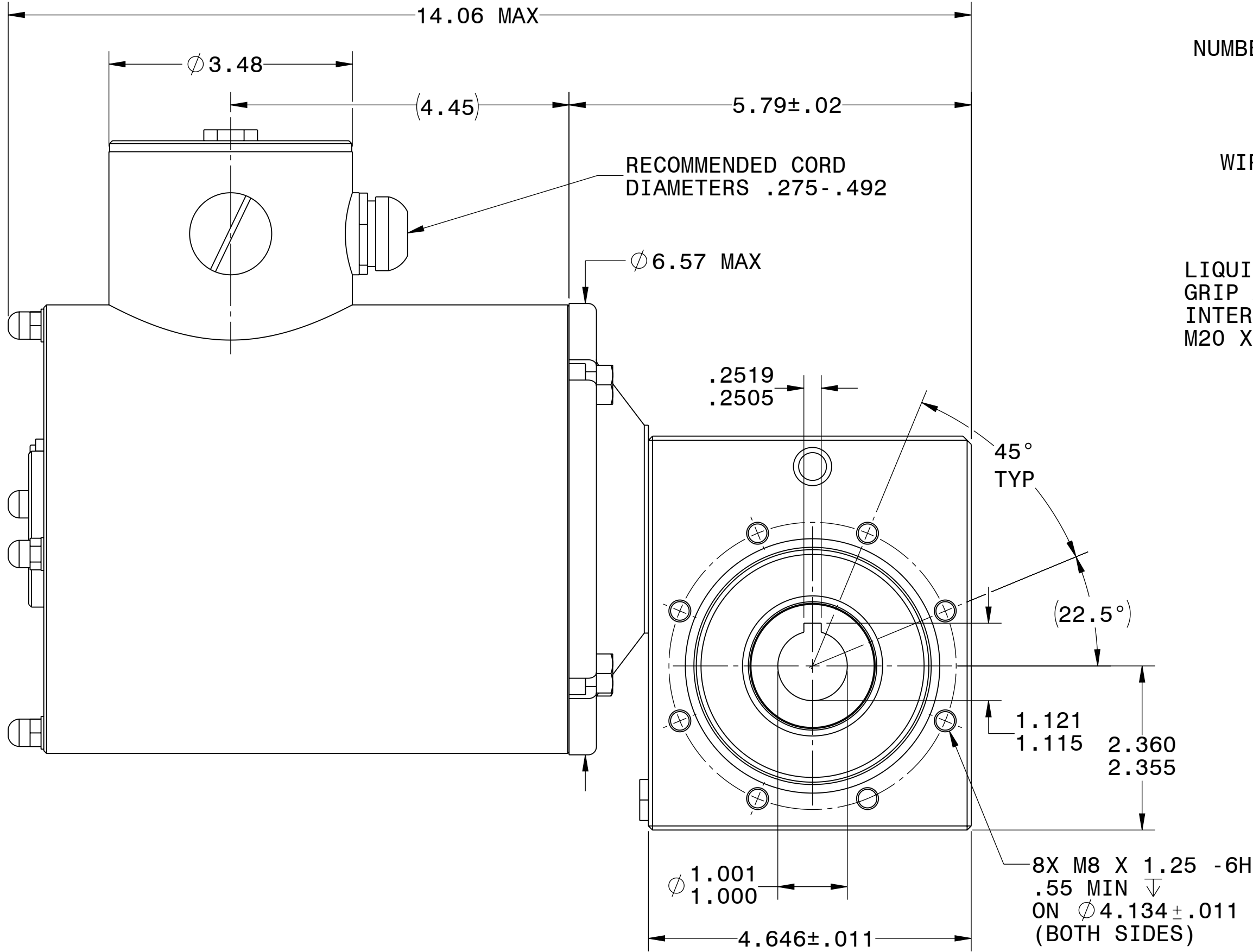
BODINE ELECTRIC COMPANY

PART NO./REV: INFM0441 B

DESCRIPTION:
GEARMOTOR 56R1BSPP-50JW/H

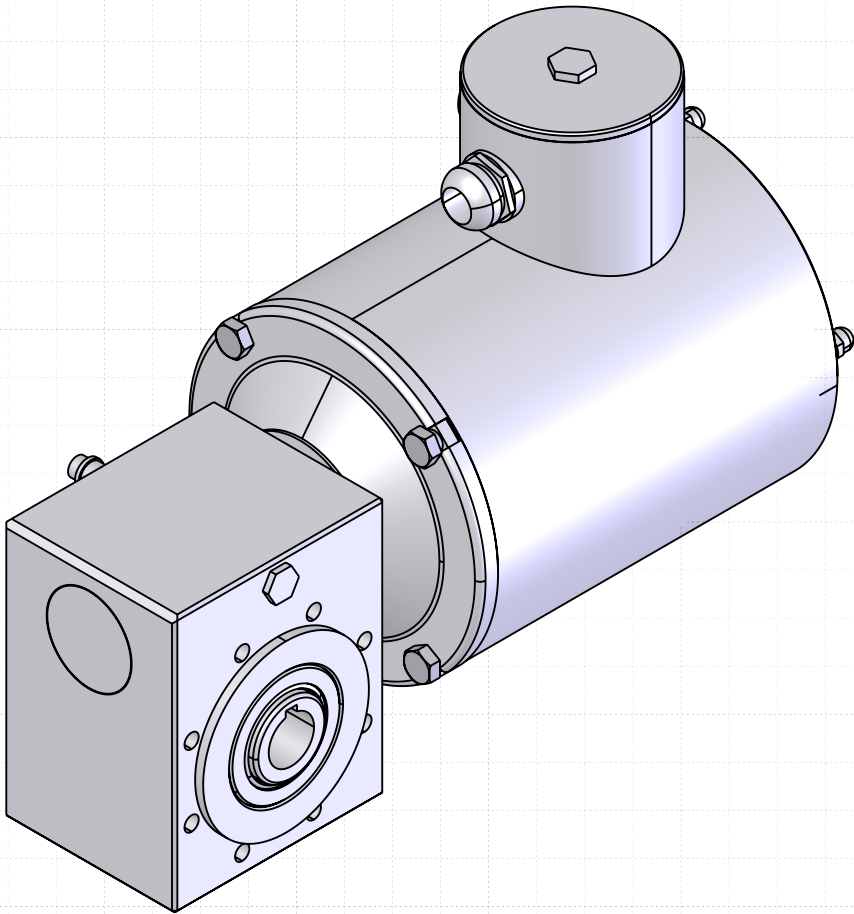
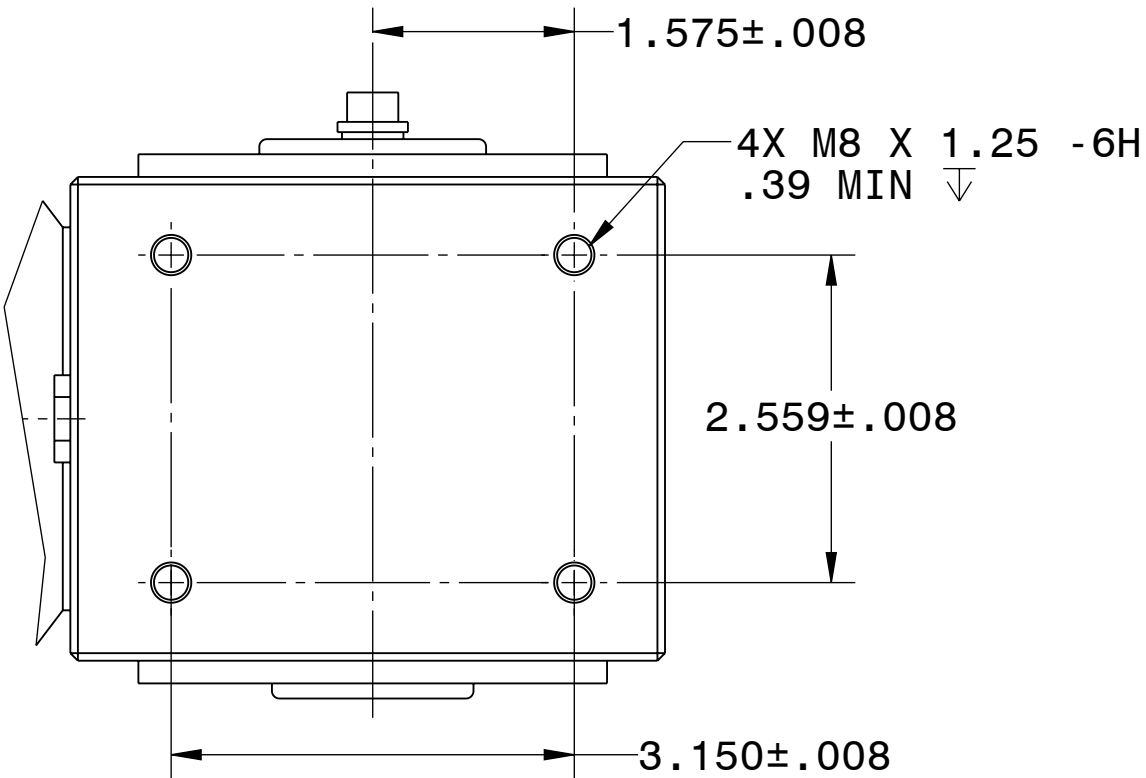
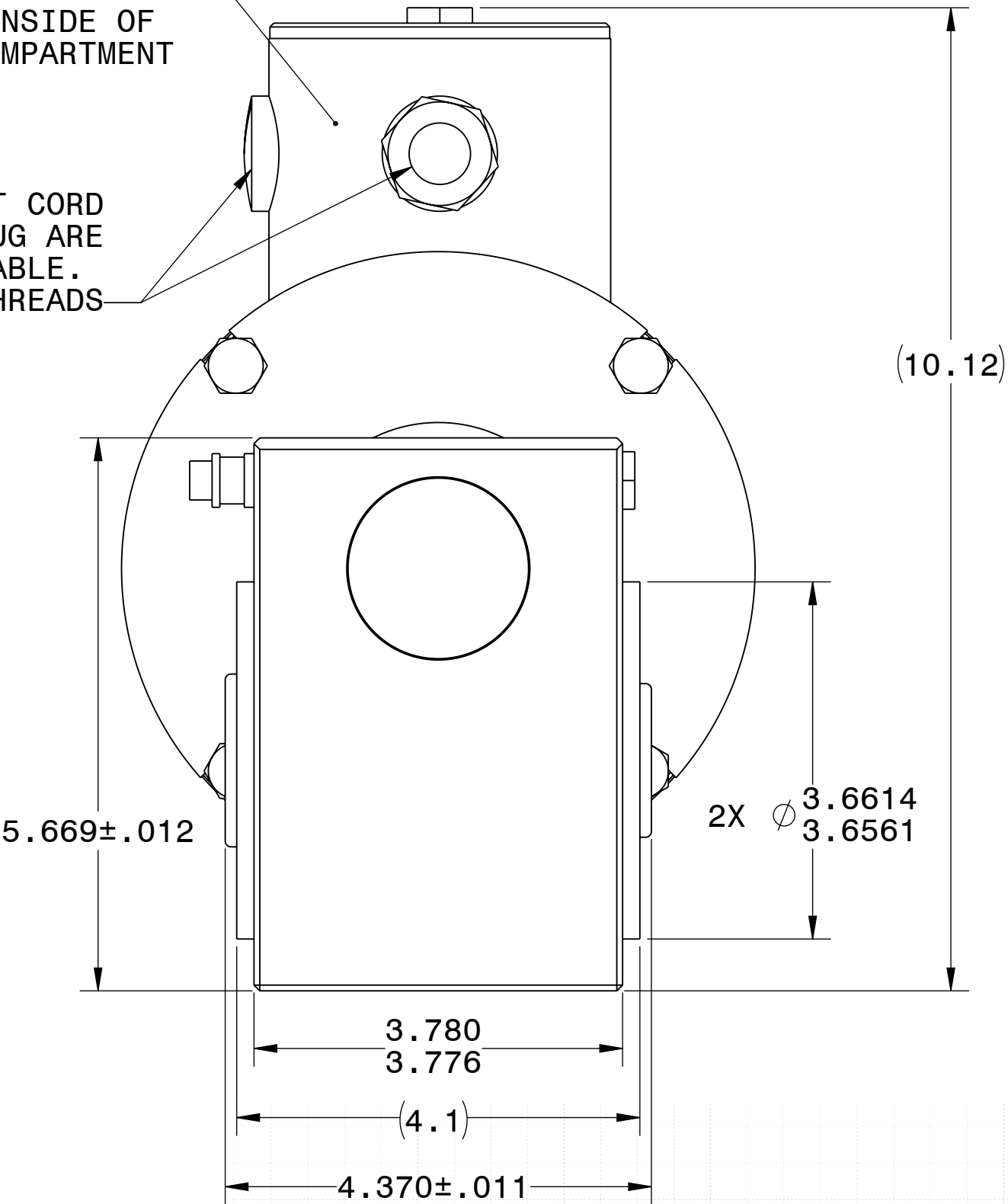
SHEET:
1/2
SCALE:
2:3
C

UNLESS OTHERWISE SPECIFIED:
UNITS ARE IN INCHES [mm]
TOLERANCES: .XX:±.01 .XXX:±.005
ANGLES: X°:±3° X.X°:±0.5°



NUMBER OF LEADS VARY
6.0±.5 LONG
.50±.06 TYP
STRIP LENGTH
INSIDE OF
WIRING COMPARTMENT

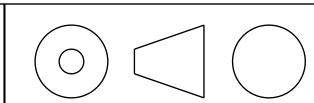
LIQUID TIGHT CORD
GRIP AND PLUG ARE
INTERCHANGEABLE.
M20 X 1.5 THREADS



REPRESENTATIVE OF MODEL NUMBER(S):
9001 9002 9003 9004 9005 9006

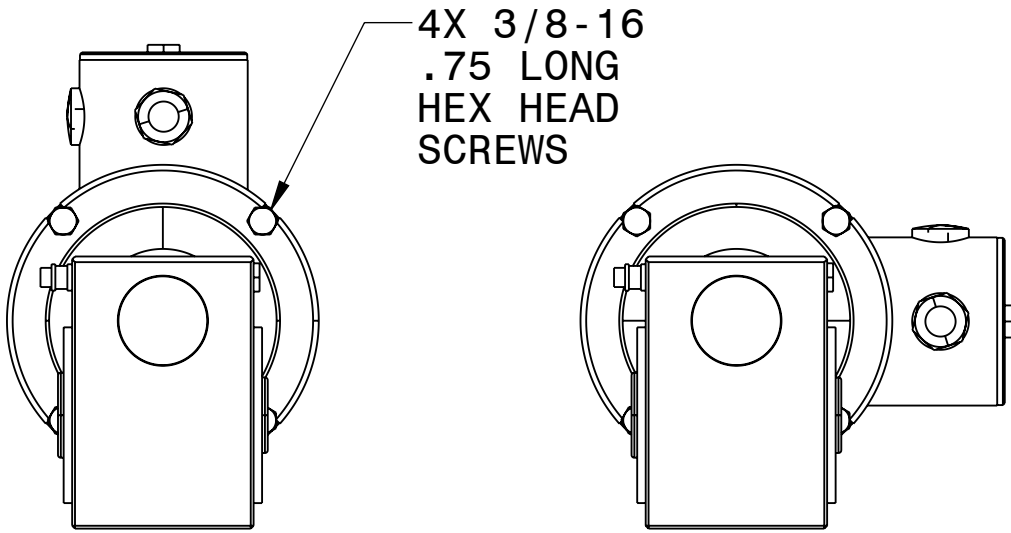
BODINE ELECTRIC COMPANY

PART NO./REV: INFM0441 B

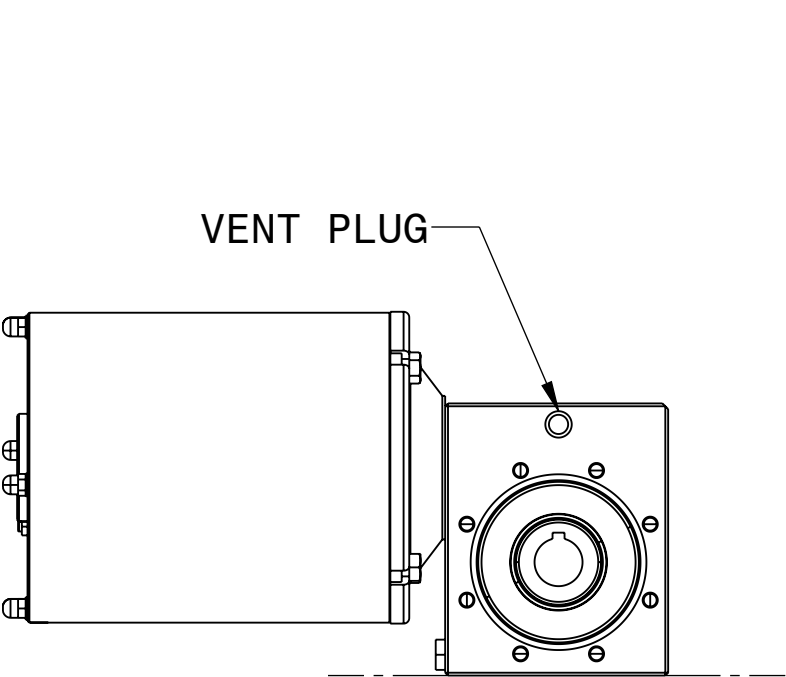


DESCRIPTION: GEARMOTOR 56R1BSPP-50JW/H	
SHEET: 2/2	UNLESS OTHERWISE SPECIFIED:
SCALE: 1:4	UNITS ARE IN INCHES [mm]
C	TOLERANCES: .XX:±.01 .XXX:±.005
	ANGLES: X°:±3° X.X°:±0.5°

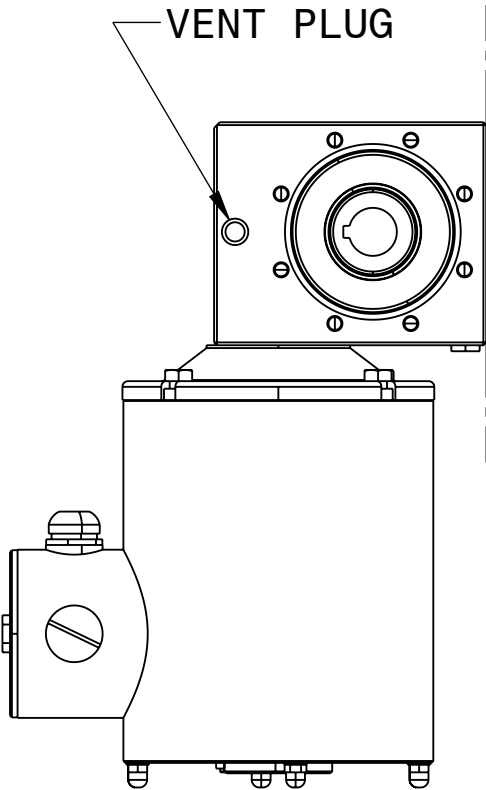
THE MOTOR (OR GEAR HEAD) CAN BE REPOSITIONED IN 90 DEGREE INCREMENTS AS NEEDED. TIGHTEN HEX HEAD SCREWS TO 20-25 FT-LB.



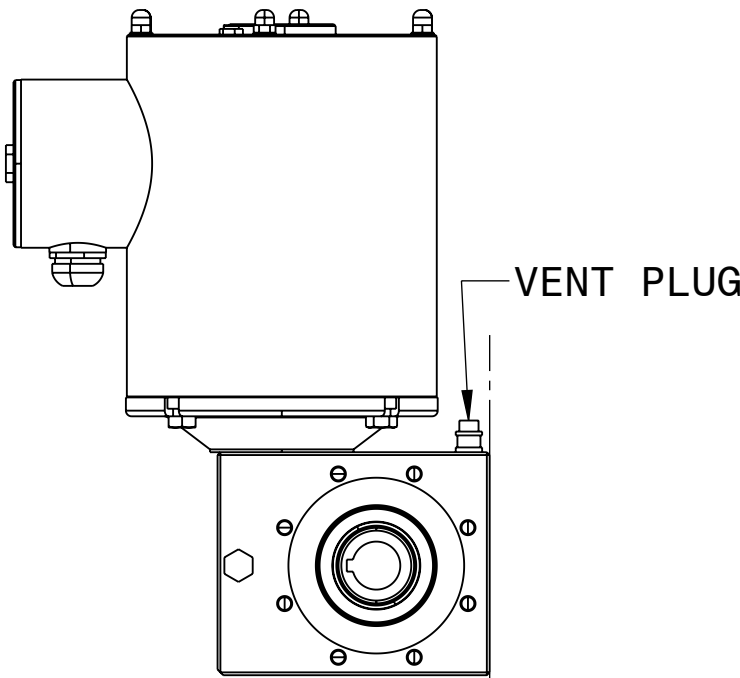
BODINE IP69K STOCK GEARMOTORS ARE DESIGNED FOR UNIVERSAL HORIZONTAL MOUNTING (POSITION #1). IF ANOTHER MOUNTING POSITION IS REQUIRED, IT IS RECOMMENDED TO INTERCHANGE THE VENT PLUG WITH THE OTHER THREADED PLUGS ON THE GEARBOX SUCH THAT THE VENT PLUG IS ABOVE THE OUTPUT SHAFT CENTERLINE (POSITION #1, 3 & 4), HORIZONTAL WITH OUTPUT SHAFT CENTERLINE (POSITION #2), OR AT THE TOP OF THE GEARBOX FACE IF THE OUTPUT SHAFT IS VERTICAL (POSITION #5 & 6). TIGHTEN THE PLUG TO 18-23 FT-LB.



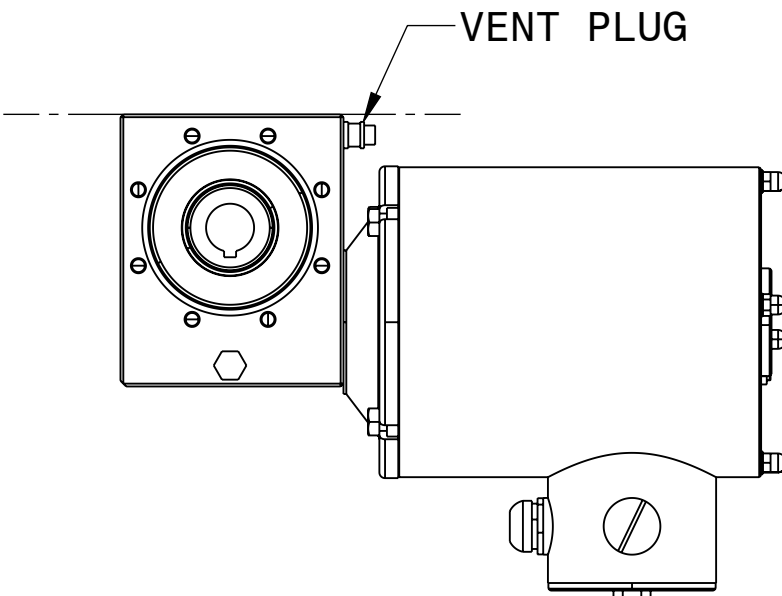
POSITION #1



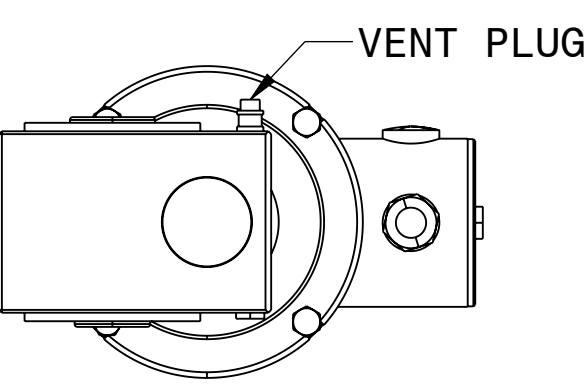
POSITION #2



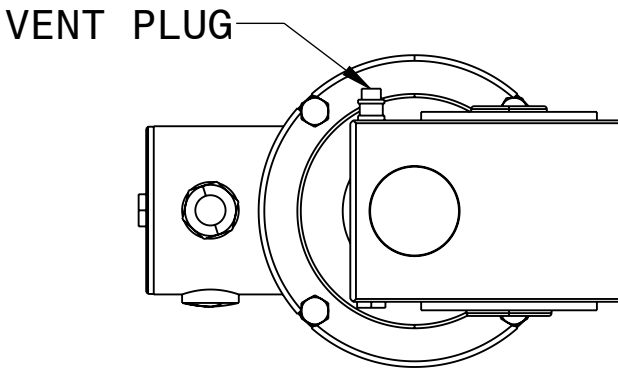
POSITION #3



POSITION #4



POSITION #5



POSITION #6

REPRESENTATIVE OF MODEL NUMBER(S):
9001 9002 9003 9004 9005 9006