



## Low Voltage WX Brushless and Permanent Magnet DC Gearmotors

The new WX gearhead is available with Bodine's 34B Brushless DC motors and 33A-frame permanent magnet DC motors. The WX is a new high-torque gearhead, built to provide longer life and higher performance than similar gearmotors in the same size range. The new WX gear train and motor windings are designed, developed and manufactured by Bodine Electric Company.

### WX Gearhead Features

- Up to 65% more torque
- All steel helical gears; lubricated for life
- Double the life of previous designs
- Gearing meets or exceeds AGMA 9 standards for quiet operation
- Synthetic lubricant improves performance, and allows these gearmotors to operate in a wide temperature range
- Adaptor plate, model 0995, allows for 3-hole mounting configuration

For complete information about our 34B brushless DC motors, 33A permanent magnet DC motors, and motor speed controls please visit [www.Bodine-Electric.com](http://www.Bodine-Electric.com).



### TYPICAL APPLICATIONS

These new gearmotors are designed to drive applications such as conveyor systems, packaging equipment, metering devices and commercial appliances.

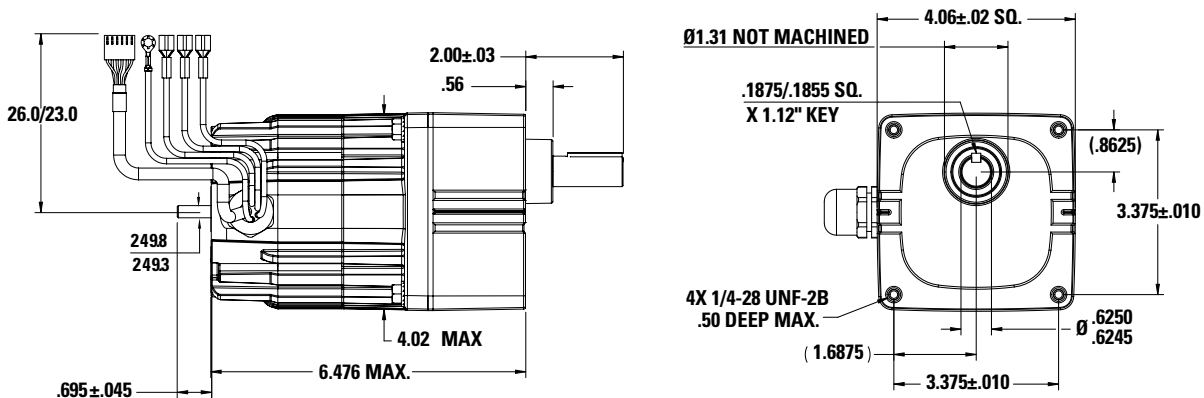
Speed (rpm)	Rated Torque (lb-in.)	Current (Amps)	Motor HP	Radial Load (lbs.)	Gear Ratio	Weight (lbs.)	Product Type <sup>1</sup>	Model No.	Acc'y Shaft Model No.
<b>34B-WX Brushless DC, 24 VDC Rated Voltage, TENV</b>									
8	205	9.6	1/5	130	312	9.0	34B3BEBL-WX4	1293	1323
15	200	9.6	1/5	130	172	9.0	34B3BEBL-WX4	1292	1322
26	185	9.6	1/5	140	98	9.0	34B3BEBL-WX4	1290	1320
38	190	9.6	1/5	140	66	9.0	34B3BEBL-WX3	1288	1318
46	185	9.6	1/5	130	55	9.0	34B3BEBL-WX3	1287	1317
57	157	9.6	1/5	130	44	9.0	34B3BEBL-WX3	1286	1316
84	106	9.6	1/5	160	30	9.0	34B3BEBL-WX3	1285	1315
123	77	9.6	1/5	60	20	9.0	34B3BEBL-WX2	1284	1314
181	46	9.6	1/5	65	14	9.0	34B3BEBL-WX2	1283	1313
266	31	9.6	1/5	80	9	9.0	34B3BEBL-WX2	1282	1312
455	18	9.6	1/5	90	6	9.0	34B3BEBL-WX2	1280	1310
658	9	9.6	1/5	65	4	9.0	34B3BEBL-WX2	1279	1309
<b>33A-WX Permanent Magnet DC, 12/24 VDC Rated Voltage, TENV</b>									
2.9/8.0	205	10.2	1/11 / 1/4	130	312	9.7	33A5BEPM-WX4	1222	1422
5/15	200	10.2	1/11 / 1/4	130	172	9.7	33A5BEPM-WX4	1220	1420
9/26	185	10.2	1/11 / 1/4	140	98	9.7	33A5BEPM-WX4	1218	1418
14/38	190	10.2	1/11 / 1/4	140	66	9.7	33A5BEPM-WX3	1216	1416
16/46	185	10.2	1/11 / 1/4	130	55	9.7	33A5BEPM-WX3	1214	1414
21/57	157	10.2	1/11 / 1/4	130	44	9.7	33A5BEPM-WX3	1212	1412
30/84	106	10.2	1/11 / 1/4	160	30	9.7	33A5BEPM-WX3	1210	1410
44/123	77	10.2	1/11 / 1/4	60	20	9.7	33A5BEPM-WX2	1208	1408
65/181	46	10.2	1/11 / 1/4	65	14	9.7	33A5BEPM-WX2	1206	1406
96/266	31	10.2	1/11 / 1/4	80	9	9.7	33A5BEPM-WX2	1204	1404
164/455	18	10.2	1/11 / 1/4	90	6	9.7	33A5BEPM-WX2	1202	1402
237/658	9	10.2	1/11 / 1/4	65	4	9.7	33A5BEPM-WX2	1200	1400

1. The fifth digit of the product type changes from "B" to "F" for accessory ready models. **Lead Time:** all models typically ship within three to four business days. Brushless models require a speed control.

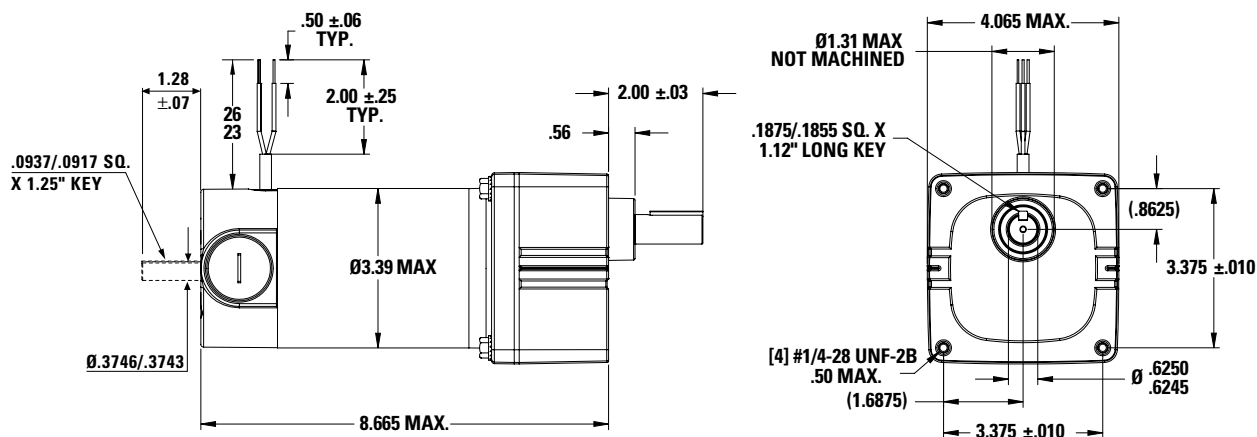


## Gearmotor Dimensions (inches)

### 34B-WX 24 VDC Brushless DC Gearmotors



### 33A-WX 12/24 VDC Permanent Magnet DC Gearmotors

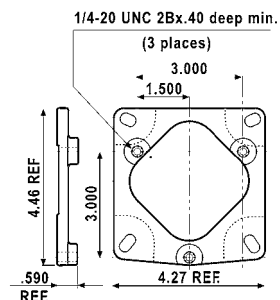


Optional "L" Bracket model 0970 also available.



## Bolt-on Adaptor for Three-Hole Mounting

The WX gearhead can easily be converted to be a drop-in replacement for applications that are configured with a three-hole mounting pattern. Adaptor plate kit model 0995 simply bolts to the existing mounting holes.



P/N 074 81096 rev.B  
© Copyright. All rights reserved.